



DEPARTMENT OF PSYCHOLOGY

Discover the Science of the Mind

 **IILM UNIVERSITY**

Gurugram | Greater Noida

Our Vision

Our vision is to be a leading University that inspires students to become responsible global citizens and leaders in their chosen fields and in the world through an innovative, interdisciplinary, and inclusive approach to learning.

Our Mission

Our mission is to provide students with an education that is intellectually stimulating and practically relevant. We aim to foster a community of learners who are innovative, interdisciplinary, and socially responsible. We offer a range of programmes that are designed to prepare students for purposeful work and to inspire them to make a positive difference in the world. We are dedicated to empowering students with the knowledge, skills, and experiences they need to achieve their full potential and to become responsible global citizens and leaders.

Meet the Visionary Leaders



Prof (Dr) Anupama Srivastava

Dean

School of Liberal Arts and Social Sciences
IILM University, Greater Noida



Dr Sakshi Kaul

Professor & HOD

Department of Psychology
IILM University, Gurugram



Dr Aswani RS

Associate Dean

School of Liberal Arts and Social Science
IILM University, Greater Noida

Department Overview

The department offers a comprehensive educational experience through its undergraduate and postgraduate programmes in Psychology, along with specialised master's courses in Social Work, Guidance, and Counselling. The curriculum is designed to foster a deep understanding of human behaviour, mental processes, and social dynamics, blending theoretical foundations with practical applications.

Students benefit from experiential learning opportunities, including hands-on training, research projects, internships, and community engagement initiatives. The department is committed to nurturing critical thinking, emotional intelligence, and ethical responsibility to prepare graduates for diverse professional roles in mental health, counselling, social services, academia, and research.

Programmes Available (Gurugram)

Undergraduate

BA (Hons) Psychology
BSc (Hons) Psychology
BA/BSc Dietetics and Nutrition

Postgraduate

MA Psychology
MSc Psychology
Masters of Social Work (MSW)
MA Guidance and Counselling

Programmes Available (Greater Noida)

Undergraduate

BA (Hons) Psychology
BSc (Hons) Psychology

Postgraduate

MA Psychology
MSc Psychology

Programme Description

BA (Hons) Psychology

The BA (Hons) Psychology is an undergraduate programme designed to offer a comprehensive understanding of human behaviour and mental processes. Aligned with the National Education Policy (NEP) 2020, the curriculum integrates core psychological principles with diverse theoretical perspectives and practical experiences.

BSc (Hons) Psychology

The BSc (Hons) Psychology is a scientifically rigorous undergraduate programme that blends foundational psychological theories with advanced research methodologies and practical application. Designed in alignment with the National Education Policy (NEP) 2020, the curriculum emphasises data analysis, cognitive science, and evidence-based research techniques.

Minors to enhance Career Flexibility and Perspective

We offer a range of minors across various disciplines, enabling students to tailor their **BA/BSc programmes** to align with their career goals and interests. These minors provide interdisciplinary exposure to fields such as society, business, and technology, fostering a well-rounded understanding of diverse domains.

By choosing minors, students gain enhanced career flexibility and develop a broad skill set that complements their primary specialisation. This approach helps students cultivate a comprehensive perspective on real-world challenges, encourages innovative thinking, and equips them to become adaptable, resourceful, and future-ready leaders in their chosen fields.

Minor Options

◆ Minor in Management

Principles of Management: Understanding key functions including planning, organising, leading, and controlling, with practical applications for managing people, processes, and resources.

◆ Minors in Liberal Studies

Digital Media: Explore principles, tools, and techniques for creating, managing, and distributing digital content across multiple platforms.

The Making of the Constitution: Study the historical, political, and philosophical foundations behind the development of a nation's constitution.

Political Theory: Understand fundamental ideas, concepts, and debates shaping political thought and practice.

Understanding Self and Others: Examine personal identity, interpersonal relationships, and social dynamics.

◆ Minor in Design

Design Basics: Explore the fundamental principles of design across various contexts.

BA/BSc Dietetics and Nutrition

The **BA/BSc Dietetics and Nutrition** is a specialised programme focusing on food, nutrition, and health. It emphasises the science of nutrition and its application to promoting health and managing diseases. The course covers advanced topics such as nutritional biochemistry, clinical nutrition, and diet planning, alongside an understanding of the role of nutrition in public health.

The programme prepares graduates for careers in clinical settings, public health organisations, food industries, and wellness centres, with an emphasis on improving health outcomes and promoting overall well-being.

The curriculum is designed to enhance student's abilities and potential, enabling them to create effective dietary interventions and strategies to benefit clients and patients. The programme combines theoretical rigour with practical exposure, allowing students to develop professional skills, health advocacy expertise, and ethical practices as practising nutritionists.

Masters of Social Work

The **Masters of Social Work (MSW)** programme focuses on the principles of social work and their application in addressing social issues, promoting social justice, and enhancing the well-being of individuals, families, and communities.

The programme prepares graduates for careers in social services, community organisations, healthcare environments, and advocacy groups, with a strong emphasis on promoting social change and improving quality of life. The curriculum is designed to enhance student's abilities and potential to develop strategies and interventions that benefit social environments and community structures.

The Social Work programme combines a comprehensive curriculum with practical fieldwork, offering students hands-on experience in diverse environments such as NGOs, hospitals, and government agencies. Specialisation tracks in areas like mental health, child welfare, and community development enable students to pursue their interests while student-led research projects foster innovation and academic growth.



Eligibility Criteria

Undergraduate

- ◆ Completion of higher secondary education (10+2) or equivalent with a minimum aggregate score of 50%.
- ◆ For BSc Psychology, candidates must have a science background in their 10+2 education.

Postgraduate

- ◆ A bachelor's degree with a minimum of 55% from a recognised university.
- ◆ Students graduating in 2025 are also eligible to apply.

MA Guidance and Counselling

The **MA Guidance and Counselling** programme is a specialised postgraduate course designed to develop advanced counselling skills and techniques. With an emphasis on psychological theories, case studies, and practical applications, the curriculum prepares students for impactful roles in school counselling, organisational settings, mental health services, and social work.

The programme offers a balance of theoretical rigour and hands-on experience, equipping students to create effective interventions, manage crises, and practise ethically as professional counsellors.

MA Psychology

The MA Psychology programme is designed to provide students with a well-rounded education in psychology, blending theoretical foundations with applied learning. Each stream equips students with the knowledge and practical skills required to excel in their chosen field. With an emphasis on research, critical thinking, and professional practice, the programme prepares graduates to tackle complex challenges in mental health, legal, and rehabilitative settings, while fostering ethical and culturally sensitive practices.

Specialisations

- ◆ Forensic Psychology
- ◆ Rehabilitation Psychology
- ◆ Clinical Psychology

MSc Psychology

The MSc Psychology programme is tailored to provide an in-depth understanding of psychology, with a focus on applied research and professional skills. By integrating theoretical knowledge with real-world applications, the curriculum equips students to address complex challenges in healthcare, corporate, and community settings. With access to state-of-the-art facilities and mentorship from experienced faculty, graduates are prepared to become leaders in their chosen fields, driving positive change in society.

Specialisations

- ◆ Counselling Psychology
- ◆ Health Psychology
- ◆ Organisational Psychology



Centre for Emotional Intelligence

ibloom -Fostering Holistic Growth



At IILM University, Gurugram the **Centre for Emotional Intelligence (CEI)** has taken a significant step in enhancing student support with the launch of **ibloom – IILM Centre for Holistic Health and Counselling**. This forward-thinking initiative aims to provide a safe and nurturing space where students can seek guidance and counselling tailored to their individual emotional and psychological needs.

Key objectives of ibloom

Holistic Development: Emphasising growth beyond academics by fostering emotional intelligence and resilience.

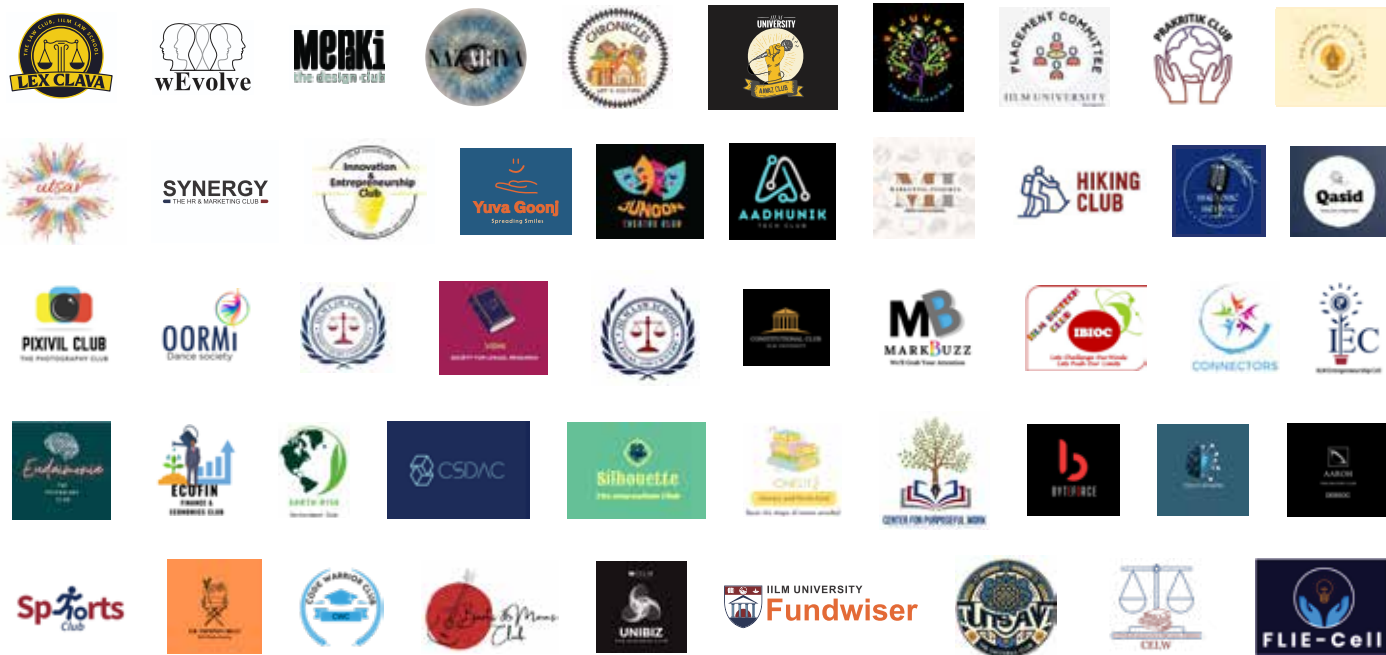
Empathetic Support: Personalised counselling by skilled counsellors and dedicated faculty to address student concerns with care and professionalism.

Comprehensive Wellness: Workshops and wellness programmes designed to help students develop coping strategies, improve emotional awareness, and enhance interpersonal skills.



Clubs & Societies

The clubs and societies provide a platform for students to express their talent and act as the network lifeline for the entire IILM Community. This interaction with fellow students and active participation helps with the overall growth and development of a young person into a well-rounded individual.



Residential Accommodation

The universities are centrally located on Golf Course Road, Gurugram and Knowledge Park II, Greater Noida. Housing is on campus, which makes it both safe and convenient for all our students. Each hostel has spacious and well-furnished rooms offering a plush, modern lifestyle. The residence dining facility offers fresh and nutritious food to the students. Campus activities at IILM University allow for unparalleled bonding between the students.





 **IILM UNIVERSITY**
Gurugram | Greater Noida

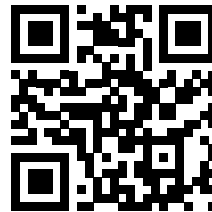
Join the IILM Family - Your Future Starts Here

Admission Process:

Your Journey Begins Now - A seamless admission process designed with you in mind. Apply today and take the first step towards your dream career.

Scholarships:

Invest in Your Future - Explore our scholarships and financial aid options, tailored to help you achieve your academic goals without financial stress.



SCAN FOR
MORE
DETAILS

Ready to Take the Leap?

Visit our campus, meet our community, and see for yourself why IILM University is the right choice for your future. We can't wait to welcome you!

Contact Information:



Undergraduate Programme
+91-6366975192

Postgraduate Programme
+91-6366975199



FOR GURUGRAM
admissions.iilmu@iilm.edu

FOR GREATER NOIDA
admissions.gn@iilm.edu



FOR GURUGRAM
IILM University Gurugram:
1, Knowledge Center, Golf Course Rd,
Sector 53, Gurugram, Haryana 122003

FOR GREATER NOIDA
IILM University G. Noida:
Plot No.16-18, Knowledge Park II,
Greater Noida, Uttar Pradesh 201306

Follow us !

